



AUSTRALIA

**Mister Hitches
3650kg HITCH
SHORTER SHANK STYLE**

Designed and developed by
MISTER HITCHES AUSTRALIA.

Many Pajero Sport owners were not satisfied with their OEM hitch as it was too close to the vehicle's bumper and their D035 rubbed against the face plate of the OEM hitch so we have now developed a slightly longer hitch than standard which has been made especially for the shallow receiver of the genuine Mitsubishi towbar.

So no need to cut down aftermarket hitches anymore, we have the correct fit.

The shorter shank is suitable for the shallow towbar receivers of the MM Pajero Sport & Ford Ranger (Pre Next-Gen)

This hitch has a 25mm x 75mm ball platform and is one of only a few ball mounts which is also suitable for the Stone Stomper under ball bracket. (as pictured)

Features:

- G.T.W.: 3650kg T.W.: 365kg
- PIN HOLE TO BALL HOLE: 221mm
- PIN HOLE TO BALL PLATFORM: 111mm
- PIN HOLE TO END OF SHANK: 40mm
- 25mm THICK BALL PLATFORM
- FULLY REVERSIBLE FOR DROP OR RISE USE
- DROP: 57mm RISE: 31mm
- D035 COMPATIBLE.
- 5.75mm THICK WALLED STEEL SHANK, ROBOTIC WELDED FOR STRENGTH.
- SEAGUARD MATTE BLACK POWDER COAT FINISH GIVES SUPERIOR CORROSION PROTECTION.
- COMPLIES TO THE TESTING REQUIREMENTS OF ADR62 & AS4177 AUSTRALIAN STANDARDS

- Part No. MH001HDP
- Barcode: 0000006792794
- Weight: 3.5kg
- Carton: 6pcs



DO NOT OVERLOAD

WARNING

THIS IS ANOTHER QUALITY MISTER HITCHES PRODUCT

MADE TO MISTER HITCHES SPECIFICATIONS

www.misterhitches.com.au

**HEAVY DUTY 3650kg
HD SERIES HITCH
SHORTER SHANK**

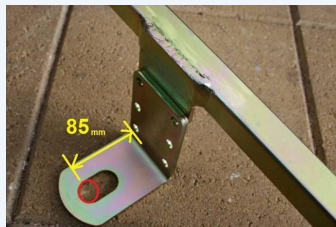
Part No. MH001HDP

SUITS THE SHALLOW RECEIVER OF THE MITSUBISHI PAJERO SPORT WITH O.E.M. TOWBAR AND OTHER VEHICLES REQUIRING A SHORTER SHANK

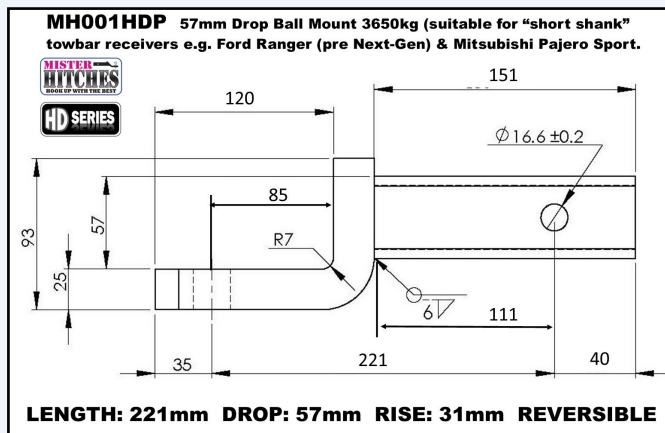
PAJERO SPORT



**PIN HOLE TO SHANK END
40mm TO SUIT
SHALLOW
RECEIVERS**



**STONE STOMPER
COMPATIBLE**



intertrade
GLOBAL PRODUCT IMPORTS

INTERTRADE HOLDINGS PTY LTD
UNIT 1, 2 TIDAL WAY BIBRA LAKE 6163 WA
TEL: 08 9418 7044
info@intertradedholdings.com.au
www.misterhitches.com.au